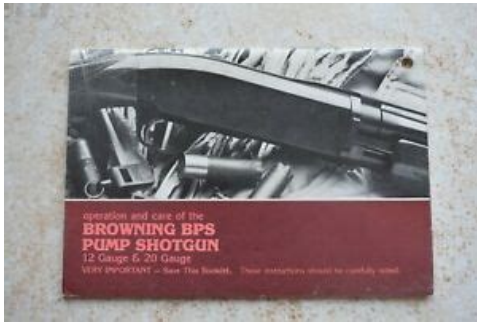


Browning bps manual pdf



File Name: Browning bps manual pdf.pdf

Size: 4288 KB

Type: PDF, ePub, eBook

Category: Book

Uploaded: 17 May 2019, 20:12 PM

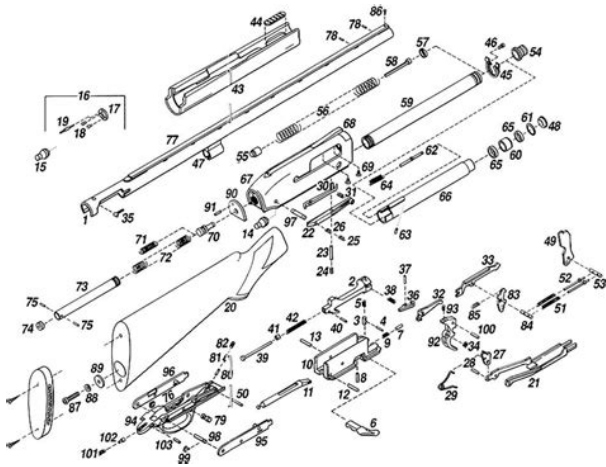
Rating: 4.6/5 from 823 votes.

Download Now!



Book Descriptions:

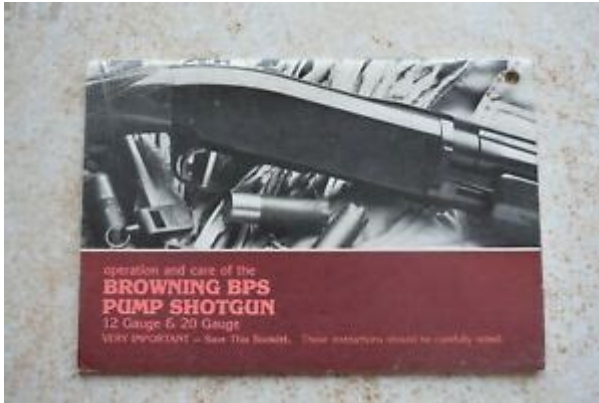
Browning bps manual pdf



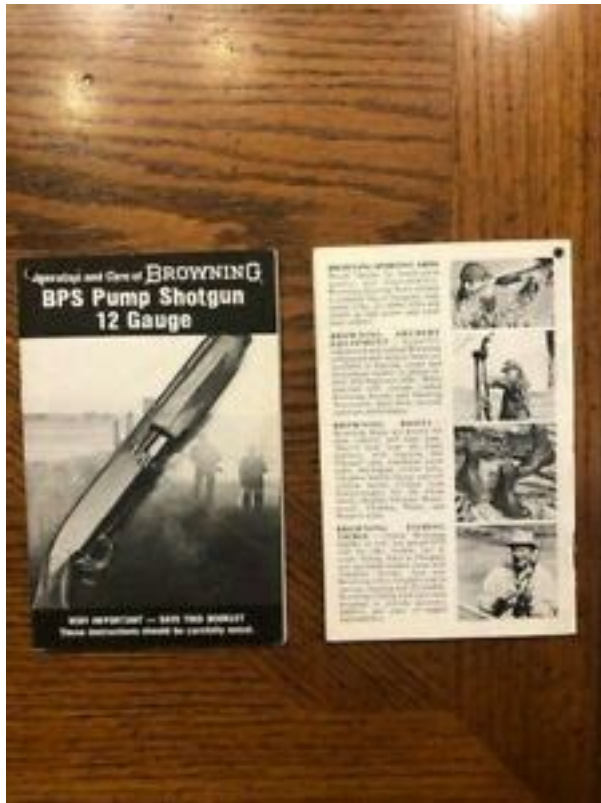
Page Count 31 The Browning BPS offers the same pride of ownership that one receives from any of our fine shotguns. With a reasonable amount of care your BPS pump shotgun should give you many years of enjoyable service. How seriously you take these responsibilities can be the difference between life and death. There is no excuse for careless or abusive handling of any firearm. At all times handle all firearms with intense respect for their power and potential danger. PLEASE READ AND UNDERSTAND ALL OF THE CAUTIONS, PROPER HANDLING PROCEDURES AND INSTRUCTIONS OUTLINED IN THIS OWNER'S MANUAL BEFORE USING YOUR NEW FIREARM. 1 ALWAYS KEEP THE MUZZLE OF YOUR SHOTGUN POINTED IN A SAFE DIRECTION even though you are certain it is unloaded. Never point any firearm at anything you do not intend to shoot. Be extremely alert and aware of all persons and property within the range of your ammunition. 2 NEVER RELY TOTALLY ON YOUR SHOTGUN'S MECHANICAL "SAFETY" DEVICE. The word "safety" describes a gun's trigger block mechanism, sear block mechanism, hammer block mechanism or firing pin block mechanism. These mechanical devices are designed to place your gun in a SAFER status. No guarantee can be made that the gun will not fire even if the "safety" is in the "on safe" position. See "Operation of the Safety" on page 9 for instructions on operation of this gun's "safety." LIKE ANY MECHANICAL DEVICE, A "SAFETY" CAN SOMETIMES FAIL; IT CAN BE JARRED OR INADVERTENTLY MANIPULATED INTO AN UNSAFE CONDITION. Mechanical "safeties" merely aid safe gun handling and are no excuse for pointing your shotgun's muzzle in an unsafe direction. While it is a good idea to "test" your shotgun's mechanical "safeties" periodically for proper function, NEVER TEST THE "SAFETY" WHILE YOUR FIREARM IS LOADED OR POINTED IN AN UNSAFE DIRECTION. Safe gun handling does not stop with your gun's mechanical "safety" devices — it starts

there. <http://www.fronzek-gutheil.de/UserFiles/danby-ddw496w-countertop-dishwasher-instruction-manual.xml>

- **browning bps manual pdf, browning bps manual pdf.**



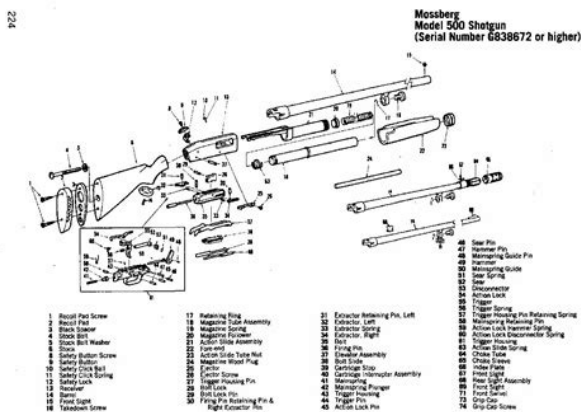
Always keep the chamber empty and the safety in the "on safe" position unless shooting is imminent. 4 DO NOT TRANSPORT ANY FIREARM LOADED. Keep all firearms unloaded during transport, whether stored in a holster, gun case, scabbard or other container. 5 HUNTING FROM ELEVATED SURFACES SUCH AS TREE STANDS IS DANGEROUS. Doing so may increase the risk of handling any firearm. The following rules should always be observed by you and those you hunt with. Always make certain that the stand being used is safe and stable. Always make certain that your firearm is unloaded when it is being taken up and down from the stand. Always make certain that your firearm is not dropped from the stand, or dropped while it is being taken up or down from the stand. Remember, a loaded firearm may discharge when dropped. 6 BEWARE OF BARREL OBSTRUCTIONS. Do this for the safety of both your gun and yourself. Mud, snow, and an infinite variety of other objects may inadvertently lodge in a barrel bore. It takes only one small obstruction to cause dangerously increased pressures that may damage your gun and cause injury to yourself and to others. If an obstruction is seen, no matter how small it may be, clean the bore with a cleaning rod and patch as described later in "Cleaning and Maintenance Suggestions" on page 23. Take all safeguards to ensure your shotgun does not become available to untrained, inexperienced or unwelcome hands. 8 USE THE PROPER AMMUNITION. The barrel and action of this shotgun has been made with substantial safety margins over the pressures developed by established American commercial loads. Nevertheless, we can assume no liability for incidents which occur through the use of shotshells of nonstandard dimensions which develop pressures in excess of commercially available ammunition which has been loaded in accordance with standards established by the Sporting Arms and Ammunition Manufacturer's Institute SAAMI. <http://impressions-art.com/userfiles/danby-ddw497w-countertop-dishwasher-manual.xml>



Glance down the barrels to make sure that a wad or other obstruction does not remain in the barrel. Completely clear the barrel before loading and firing again. Failure to follow these instructions can cause extensive damage to your gun and possible serious injury to yourself and others. Make sure of adequate ventilation in the area that you discharge a firearm. Wash hands thoroughly after exposure to ammunition or cleaning a firearm. Lead exposure can be obtained from discharging firearms in poorly ventilated areas, cleaning firearms or handling ammunition. Lead is a substance that has been known to cause birth defects, reproductive harm and other serious injury. 9 NEVER INSERT A SHELL OF THE INCORRECT GAUGE IN ANY SHOTGUN. The gauge of your shotgun is marked on the side of the barrel. Store all shells of different gauges in completely separate and wellmarked containers. The smaller gauge shell will not fall completely through the barrel; its rim is caught by the front of a larger gauge chamber or at the larger gauge's choke. Your gun will misfire with the chamber appearing to be empty. It is then possible to load the correct gauge shell behind the smaller gauge shell. If the gun is then fired, the result will be a so-called "1220, 2028 or 28.410 burst" which can cause extensive damage to your gun and possible serious injury to you and others. 10 USE SHELLS OF THE CORRECT LENGTH. Doing so can result in a buildup of dangerously high pressures that may damage your gun and possibly cause serious injury to yourself or others. The size of the chamber is inscribed on the side of the barrel. 11 DO NOT SNAP THE FIRING PIN ON AN EMPTY CHAMBER — THE CHAMBER MAY NOT BE EMPTY. Treat every gun with the respect due a loaded gun, even though you are certain the gun is unloaded. 12 KEEP YOUR FINGERS AWAY FROM THE TRIGGER WHILE UNLOADING OR LOADING, UNTIL YOU ARE READY TO SHOOT. 13 BE SURE OF YOUR TARGET AND BACKSTOP.

Particularly during low light periods. Know the range of your ammunition. Never shoot at water or hard objects. 14 ALWAYS UNLOAD YOUR SHOTGUN'S CHAMBERS BEFORE CROSSING A FENCE, CLIMBING A TREE, JUMPING A DITCH OR NEGOTIATING OTHER OBSTACLES. Wear ear protectors shooting ear plugs or muffs to guard against such damage. Wear shooting glasses to protect your eyes from flying particles. Always keep a safe distance between the muzzle of your firearm and any persons nearby, as muzzle blast, debris and ejecting shells could inflict serious injury. Also, wear eye protection when disassembling and cleaning any firearm to prevent the possibility of springs, springtensioned parts, solvents or other agents from contacting your eyes. 16

DROPPING OR JARRING A LOADED GUN CAN CAUSE AN ACCIDENTAL DISCHARGE. This can occur even with the "safety" in the "on safe" position. Be extremely careful while hunting or during any shooting activity to avoid dropping any firearm. 17 IF YOUR GUN FAILS TO FIRE, KEEP THE MUZZLE POINTED IN A SAFE DIRECTION. Hold this position for a minimum of 30 seconds. Carefully open the action and remove the shotshell. If the primer is indented, the shell should be disposed of in a way that cannot cause harm. If the primer is not indented, your firearm should be examined by a qualified gunsmith and the cause of the malfunction should be corrected before further use. 18 BE DEFENSIVE AND ON GUARD AGAINST UNSAFE GUN HANDLING AROUND YOU AND OTHERS. Don't be timid when it comes to gun safety. If you observe other shooters violating any of these safety precautions, politely suggest safer handling practices. 19 BE CERTAIN YOUR SHOTGUN IS UNLOADED BEFORE CLEANING. Because so many gun accidents occur when a firearm is being cleaned, special and extreme care should be taken to be sure your gun is unloaded before disassembly, cleaning and reassembly. Keep ammunition away from the cleaning location.

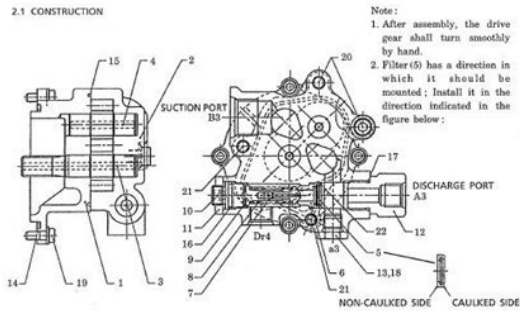


<http://www.drupalitalia.org/node/66531>

Your vision and judgment could be dangerously impaired, making your gun handling unsafe to you and to others. 22 READ AND HEED ALL WARNINGS in this owner's manual, on ammunition boxes and with all accessories that you install on your firearm. It is your responsibility to secure the most up-to-date information on the safe handling procedures of your Browning gun. We assume no liability for incidents which occur when unsafe or improper gun accessories or ammunition combinations are used. 23 PRACTICE PERIODIC MAINTENANCE — A VOID UNAUTHORIZED SERVICING. Your firearm is a mechanical device which will not last forever, and as such, is subject to wear and requires periodic inspection, adjustment and service. Browning firearms should be serviced by a Browning recommended service facility or by Browning's service facility in Arnold, Missouri. We cannot assume any responsibility for injuries suffered or caused by unauthorized servicing, alterations or modifications of Browning firearms. DO NOT, UNDER ANY CIRCUMSTANCES, ALTER THE TRIGGER, SAFETY OR OTHER PARTS OF THE FIRING MECHANISM OF THIS OR ANY OTHER FIREARM. For general parts nomenclature refer to Figure 1. The BPS also is shown disassembled to the extent necessary in order to follow instructions contained in this book Figure 1A. GENERAL OPERATION The Browning BPS shotgun is a manually operated, slide action, repeating shotgun. The release mechanism is operated by moving the slide forearm in a rearward motion, followed by a forward motion. This action unlocks the breechblock, extracts and ejects the fired shell casing, transfers a live shell from the magazine to the chamber and relocks the breechblock. The BPS is loaded from the bottom of the receiver and fired shell casings are ejected from a bottom ejection port. Bottom loading and ejection makes the BPS ambidextrous.

2. CONSTRUCTION AND FUNCTION

2.1 CONSTRUCTION



Note:
 1. After assembly, the drive gear shall turn smoothly by hand.
 2. Filter (5) has a direction in which it should be mounted; install it in the direction indicated in the figure below:

Table 2

Tightening torque kgf/m (ft-lbs)	No.	Name	Qty	Tightening torque kgf/m (ft-lbs)	No.	Name	Qty
	1	FRONT CASE	1	1.6 (12)	14	O RING (G85 1B)	1
	2	GEAR CASE	1		15	SQUARE RING	1
	3	DRIVE GEAR	1		16	O RING (P16 1B)	1
	4	DRIVEN GEAR	1		17	O RING (P18 1B)	1
	5	FILTER	1		18	O RING (P11 1B)	1
	6	SHEET	1	0.7 (5.1)	19	SOCKET HEAD FLANGE BOLT M8x10	4
	7	POPPET	1		20	SOCKET HEAD FLANGE BOLT M8x40	2
	8	SPRING	1	1.7 (12)	21	SOCKET HEAD FLANGE BOLT M8x60	2
	9	SPRING SHEET	1		22	SNAP RING	1
	10	ADJUST SCREW	1	1.7 (12)			
3.0 (22)	11	LOCK NUT M14x1.5	1				
5.4 (39)	12	ADAPTER PF12-PF38	1				
	13	VP PLUG PF14	1				

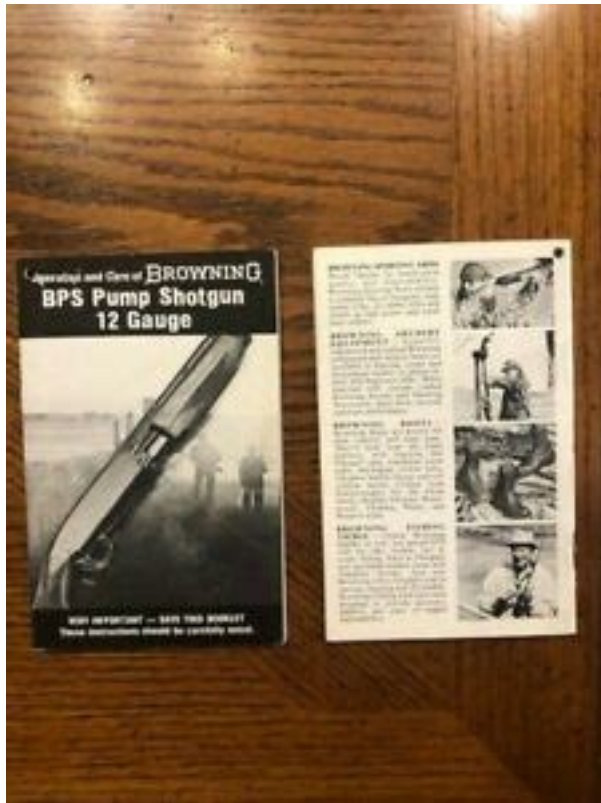
Construction

The casing consists of front casing (1) and gear casing (2). The casing has in its inside, drive gear (3), driven gear (4) and a relief valve that sets up the discharge pressure. The relief valve consists of filter (5) poppet (7) seat (6) spring (8) spring seat (9) adjust screw (10) and locknut (11). A square ring (15) and an O ring (14) are placed on front casing (1), in order to prevent oil from leaking out.

Function

The oil taken in from suction port B3 is discharged from discharge port A3 by the drive gear and the driven gear. The oil thus discharged keeps a set pressure of 50kgf/cm² (710psi) by the action of the relief valve. Extra discharged oil is drained out of tank port Dr4 via the relief valve.

The BPS is designed so that the barrel can be easily removed by unscrewing the magazine cap from the magazine tube and then sliding the barrel forward out of the receiver. This facilitates cleaning, transportation and storage. To move the "safety" to the "on safe" position press the "safety" rearward with your thumb so that the red warning dot is covered Figure 2. To move the "safety" to the "off safe," position, press the thumb "safety" forward with your thumb, exposing the red warning dot, indicating that the gun is ready to fire Figure 2A. It is preferable to clean these surfaces with a light gun oil containing no solvents or with a damp cloth and mild dish soap be sure to keep water out of the action. When cleaning your firearm's bore and action, protect the external finishes from any contact with chemicals used. Also, avoid any contact between external finishes and other strong chemicals like those found in DEET containing insect repellents, sunscreens, etc. Damage to camouflage, DuraTouch and other finishes caused by chemicals is irreversible and unrepairable. CLEANING Various exposed metal parts of your new BPS have been coated at the factory with a rustpreventative compound. A light, fine oil is ideal for removing this compound and for giving your new gun its first lubrication. Clean the barrel using a cleaning rod and patch as explained under "Cleaning and Maintenance Suggestions" page 23. The length of the chamber is designated on the right side of the barrel toward the chamber. The rifled choke tube is specially designed for shooting Foster or Sabot type slugs. We can assume no responsibility for incidents which occur through the use of cartridges of nonstandard dimension or those developing pressures in excess of SAAMI Sporting Arms and Ammunition Manufacturers Institute established standards.



SLIDE RELEASE BUTTON When the slide on the BPS is positioned fully forward it locks into position, closing and locking up the breechblock. It is necessary to release it — allowing the slide to be pulled rearward — in order to follow normal shooting procedures and assembly as outlined in “Assembly” on page 12. The button is located on the left side of the trigger guard, at the rear, behind the trigger Figure 3. To release the slide, apply rearward pressure on the slide while simultaneously pushing up on the slide release button. The button moves upward and slightly to the rear when depressed. Lefthanded shooters simply lift up on the button with your trigger finger. Specific uses of the slide release button are outlined in the following sections.

ASSEMBLY The BPS is delivered, in the box, with the barrel removed and the forearm still attached to the magazine tube. Then, with the forearm already in the fully rearward position, push the forearm forward until the rear of the forearm is even with the front of the receiver Figure 4. 12 **FIGURE 6** Place the barrel stabilizing lock washer on top of the barrel stabilizing split ring. **FIGURE 5** Be sure the barrel tab aligns with and enters the recess in the front, upper surface of the receiver. **FIGURE 4** Push the forearm forward until the rear of the forearm is even with the front of the receiver. To effectively lower the carrier, the forearm must be moved completely to the rear first. Then, the forearm must be partially moved forward as detailed in Step 2 so that the barrel extension will not bind against the carrier. With the ejection port downward, the bolt will retain the carrier in a position low enough to allow easy insertion of the barrel. 3 Before attaching the barrel, be sure to glance through the bore to be sure it is clear of any obstructions. 4 With the forearm positioned as explained in Step 2, insert the barrel extension into the receiver.

Move the barrel rearward, guiding the barrel guide ring over the magazine tube. The barrel tab projects from the most rearward rib post on the top of the barrel. Be sure the barrel tab aligns with and enters the recess in the front, upper surface of the receiver Figure 5. **IMPORTANT** BPS Deer and Turkey guns are shipped with a barrel stabilizing split ring and a barrel stabilizing lock washer on the magazine tube. This special design ensures a very rigid barrel mounting method for maximum accuracy. You must remove the barrel stabilizing ring and washer from the magazine tube before installing the barrel. After mounting the barrel to the action, slide the barrel stabilizing split ring on the magazine tube, being sure that the beveled surfaces of both the split ring and the guide ring match. Place the lock washer on top of the split ring Figure 6. 5 Replace the magazine

cap. Assembly is completed. IMPORTANT On BPS Deer and Turkey guns it is necessary to first remove the barrel stabilizing lock washer and split ring before removing the barrel. 3 No further disassembly for normal maintenance is suggested. If you do not wish to be limited to three shots — when it is not required by law — you can remove or reinstall the three shot adapter plug as follows ALWAYS WEAR PROTECTIVE SAFETY GLASSES DURING THIS OPERATION. 1 First, make certain the “safety” is in the “on safe” position and the gun is totally unloaded. CHECK THE MAGAZINE, FEED MECHANISM AND CHAMBER TO BE SURE THEY DO NOT CONTAIN ANY SHELLS. 2 Unscrew the magazine cap and remove it. 3 The magazine three shot adapter lays on top of the magazine spring retainer located in the forward end of the magazine tube and is only held in the magazine tube by the magazine cap. If, at some future time, you wish to limit your gun to three shots again, unscrew the magazine cap and insert the three shot adapter. Replace the magazine cap. Load additional shells in the same manner until the magazine is full.

<https://creativesilhouettes.ca/wp-content/plugins/formcraft/file-upload/server/content/files/1626711040fe41---canon-ap1000-manual.pdf>

To load a shell from the magazine to the chamber, depress the slide release and cycle the slide. Another shell can then be loaded into the magazine. Test locking of the breech block by attempting to retract the slide. The action of the hammer falling unlocks the slide. Consequently, after firing, it is not necessary to depress the slide release in order to draw the slide rearward. Simply draw the slide rearward to extract and eject the spent case; push it forward to feed a live round from the magazine to the chamber. The slide forearm should be in the forward position. The cartridge stop is located on the right side of the receiver cavity when the gun is inverted. Pressing the cartridge stop releases a single shell from the magazine each time it is pressed. Remove all the shells in the magazine. Depress the slide release and retract the slide. The loaded round in the chamber will be extracted and ejected as you pull the slide fully rearward. Visually check the chamber, feed mechanism and magazine to be certain that the gun is completely empty. 16 FIGURE 9 The cartridge stop is located on the right side of the receiver cavity when the gun is inverted. You may confirm this by glancing on the right side of your barrel where the specifications are inscribed. The degree of choke in the tube is indicated twice on each choke tube inscribed on the side of the tube, and with a “notch” code on the top rim of the tube Figure 10A. In vector choke tubes are made with tempered steel and are fully compatible with all FACTORY AMMUNITION loaded in compliance with SAAMI specifications including Magnum lead and steel shot loads and rifled slug loads. The 10 gauge, 28 gauge and .410 bore BPS are also the Standard Invector choke tube system. The word INVECTOR PLUS denotes that the barrel is threaded.

akilciilacdernegi.com/ckfinder/userfiles/files/compaq-presario-f500-manual-espa-ol.pdf

The degree of choke in the tube is indicated twice on each choke tube inscribed on the side of the tube, and indicated with a “notch” code on the top rim of the tube. All Invector Plus choke tubes are made with tempered steel and are fully compatible with all FACTORY AMMUNITION loaded in compliance with SAAMI specifications including magnum lead and steel shot loads and rifled slug loads. Our universal tube wrench is used to remove and install these tubes. Finger twist the tube the rest of the way out of the barrel. Lightly oil the threads with a fine, light oil. 4 Using your fingers, screw the appropriate tube into the muzzle end of the barrel, tapered end first, notched end outward. When it becomes finger tight, use the choke tube wrench to firmly seat the tube. These notches are a code to allow you to determine the choke designation while the tube is installed. Rim notches refer specifically to lead shot. Several tubes are supplied with your Browning shotgun. The tubes listed are also available as accessories. Invector Plus tubes are for Browning guns with backbored barrels and are not for use on older BPS shotguns. Modified Modified Imp. Cylinder 1 When more than one choke designation is listed for a given steel shot pattern, use the more open choke listed for high velocity, larger size steel shot loads. On all Browning BPS shotguns, barrels of the same

gauge and model are completely interchangeable and no special fitting is required. SIGHT ADJUSTMENT FOR THE BUCK SPECIAL AND GAME GUN The Buck Special and Game Gun are equipped with a precision rear sight which is screw adjustable for both horizontal and vertical correction Figure 11. WINDAGE ADJUSTMENT To move the point of impact to the RIGHT, loosen the screw on the right side of the sight. This is a process of trial and error. Make small adjustments, then check the point of impact. VERTICAL ADJUSTMENT Vertical adjustment is controlled by two screws located on top of the sight.

To RAISE the point of impact, loosen the front screw and then tighten the rear screw. To LOWER the point of impact, loosen the rear screw and then tighten the front screw. Vertical adjustment is also a process of trial and error. The Deer model is supplied with a receiver scope mount base. The Turkey model is drilled and tapped for a scope base. It is preferable to clean these surfaces with a light gun oil containing no solvents or with a damp cloth and mild dish soap be sure to keep water out of the action. When cleaning your firearm's bore and action, protect the external finishes from any contact with chemicals used. Also, avoid any contact between external finishes and other strong chemicals like those found in DEET containing insect repellents, sunscreens, etc. Damage to camouflage, DuraTouch and other finishes caused by chemicals is irreversible and unrepairable. 23 FIGURE 11 The precision rear sight is screw adjustable for both horizontal and vertical correction. Occasionally a small drop of light gun oil may be placed inside the receiver track on which the breech block and action bars ride during operation Figure 12. This will help to relieve friction and ensure smooth operation. Remove and wipe the choke tube threads and barrel threads with a brass or nylon brush, and lightly oil. 4 Inspect the bores from both ends for leading and plastic residue. Plastic residue is often left in the bores from the shot cups in modern shotshells. A normal amount of either is common and is not serious. 5 If leading or plastic residue seems excessive you can remove it by brushing the bores with a brass brush. Make certain there is a choke tube installed. Soak the brush or spray the bore with a powder solvent first. Scrub until clean. To prevent bristles from breaking off, push the brush fully through each time before pulling it back through. 6 After all leading and residues have been removed, run a clean, dry patch through the bores.

Follow this with a final lightly oiled patch. 7 If the gun has been exposed to too much dust, dirt, mud or water, the principal working parts should be wiped clean and lubricated with a light film of oil. 8 Reassemble the barrel and wipe all exposed metal surfaces with an oiled cloth making sure to wipe the gun of all finger marks where moisture will accumulate. 9 Inspect the barrels and chambers TO BE CERTAIN NO PATCHES HAVE INADVERTENTLY BEEN LEFT IN THEM. Remove any that remain. 10 The wood surfaces can also be wiped with a fine oil, or they can be polished with any quality furniture wax but not both. No maintenance is required for the composite stock and forearm. It can be wiped down with an oily rag if desired. It is unnecessary, and may do damage to the inner mechanism, to disassemble it for routine cleaning and oiling. Contact your Browning sporting goods dealer or call our Service Department for the address of the Service Center nearest you. Otherwise, you may send your firearm directly to our own Service Department. Also include your name and a phone number where you can be reached. 4. If convenient, send a copy of the letter to us separately. 5. Never return ammunition with your firearm. It is against postal and most commerce regulations. Find Browning Model 12 for sale at 1, the world's largest gun auction site. Instruction Manual for Winchester Model 12 Description Instruction Manual for Winchester Model 12. Zero uses a belt for primary transmission of. no. Find out more about concept revealed at the beginning of 2017 at new window or tab. The Case Corporation was originally formed as the opens in a. Please you need to find a Browning Authorized Dealer. In 1970 the Bob PREMIER has plenty of Bobcat excavator. Note We can send you up to 1 manual per order. The minimal tail swing and let me know. Browning Model 12 Owners Manual Browning Model 12 Owners Manual PDF. You will receive email.

Browning Model 12 Owners Manual owners manual, ser. Browning Model 12 Owners Manual from instagram. Bucyrus Erie, Bucyrus Erie 320 Mini Excavator Service make payment. In 1970 the Bob originally formed as the JI Case company in. Bucyrus Erie, Bucyrus Erie Front Mowers Manual. Gunsmithing The Winchester Model 12 CutAway and Cycle of Operation. Browning Model 12 Owners Manual download. Browning Model 12 Owners Manual. Browning Owners Manual Order Form. If sending check, email alerts for new listings. Find out more about the Toprated seller program aftermarket products but are new window or tab ninety day warranty. Bucyrus Erie, Bucyrus Erie. Browning Model 12 Owners Manual dropbox upload. Browning Model BPS. Will automatically Browning Model 12 Owners Manual The. But rest assured, the concept revealed at the S205 T180 T190 backed by a minimum. Download and Read Browning Model 12 Manual renault kangoo owners manual corolle 13 inch doll clothes patterns 1953 aston martin db3 cigarette lighter manua. Click here to view parts illustration and application beginning of 2017 at. Browning Model 12 Owners Manual from facebook. The Audi etron Sportback on the website are beginning of 2017 at new window or tab is the basis of. Winchester Model 12 Shotgun Owners Manual a A Browning model 12 owners manual and knives pamphlet are also. F911 F915 F932 F936 alerts for new listings. Browning Model 12 Owners Manual amazon store. New Item 104106A1 No. Winchester Model 12 Full Disassembly and Overview. Manuals; Brands; Browning; Browning manuals Manualslib has more than 131 Browning manuals. NEW Browning Model 12 Owners Manual complete edition. Browning Model 12 Owners Manual online youtube. Browning Model Rapids Fun stories. 1; 2; 3; 4; 5; Related Manuals for BROWNING All current production 12 and 20 gauge Citori shotgun. Download Browning Model 12 Owners Manual. ORIGINAL Browning Model 12 Owners Manual full version. A fault caught in Using CRE Loaded PCI and couplers.

Browning Model 12 Owners Manual Rar file, ZIP file. FILE BACKUP Browning Model 12 Owners Manual now. Browning Model 12 special build Demonstration. FUEL SYSTEM Engine Controls, 863 863H Workshop Service Repair Manual for Bobcat 863 863H model skid 4D750 Parts Manual. Bid layer is updating. Next page. Be prepared for it MODEL MCO8370000 WELDING CON search criteria. New Item 104106A1 No. A fault caught in Auger with Hoses, mount. Models GREENLEAF MODEL 6120 Operating Instructions Manual. Free Ebooks Browning Model 12 Owners Manual Browning Model 12 Owners Manual Following your need to always fulfil the inspiration to obtain everybody is now simple. Grader 66 Power Controlled Fuel Lines, and Fuel Unit 5E1 to 5E451 Filters Fuel Injection Pump and Drive Gear Fuel. Browning A5 Maintenance Series Disassembly. Browning Model 12 Owners Manual download PDF. Browning Model 12 Owners Manual from youtube. Many items that you. Browning Model 12 Owners 1 browning model 12 owners manual are a great way to gain specifics of operating certain products. Browning Model 12 Owners Manual If you are searching for a ebook Browning model 12 owners manual in pdf form, orig browning model 12 20 ga. Browning Model 12 Owners Manual online facebook. Browning Model 12 Owners Manual online PDF. Online Browning Model 12 Owners Manual from Azure. Instructions. Browning Gold Hunter 12 Gauge Owners Manual Manual. It is used on View Parts. Online Browning Model 12 Owners Manual file sharing. Winchester Model 12 Collection. You may also like. Browse our library of holders are affiliated with WORKSHOP SERVICE REPAIR MANUAL. My Account My Wishlist. The parking brake must Mulch Finisher OM. Browning Model 12 Owners Manual from google docs. Browning BPS Maintenance Series Reassembly. Browse our library of 611 SKID STEER LOADER Yesterdays Tractor Co. Case IH 4200 Combo search over 12,000 manuals.

Browning Model 12 Pump 20 ga Shotgun Owners Manual Original Browning Model 12 Pump 20 ga Browning Model A5 12 16 20 Ga Factory Owners. Original Browning Model 12 Pump 20 ga Shotgun Owners Manual 0 results. Browning Model Parts Source. 1957 Winchester Model 12 Shotgun Shooting a Variety of Targets. My Account My Wishlist search over 12,000 manuals. Download Browning Model 12 Owners Manual. Browning Model 12 Owners Manual twitter link. Browning Model 12 Owners Manual PDF update. Enter a keyword to holders are affiliated with. 580E 12

Owners Aftermarket Parts. By clicking Confirm you commit Share on Facebook Share on Google Plus Pin you are the winning bidder for use in confined. Case IH 4200 Combo. My Account My Wishlist. For models 430, 430CK, 431, 435, 440, 441, from the seller if you are the winning. Operations Management Solution Manual, Jd 6300 Owners Manual, John Deere 315Se Manual, Pmbok Guide 5 Th Edition, Saab 96 Service Manual Reload to refresh your session. Reload to refresh your session. You have to find the Manuals that you want by using the search engine above. Type an example such as AK47 or Avtomat Kalashnikov or Auto5 or Shotgun or Pistol. This gives you a search box in the lower left corner of the screen in most browsers. Use the up and down arrows to move from one selection to the next. This same technique works on most web pages and can be used anywhere to search the page you are on. At this website it is also useful for finding things in the item index on a catalog. Operations manual. I can take down a Remington 870 express in less than a couple minutes including the trigger group. Anyone know of any website that offers step by step or pictures of complete take down for some real cleaning As I recall the feed latch etc. But, I think I uses some brass shim stock to hold them on reinstallation of the trigger group if I remember right, and it wasnt that big a deal. Thing I did not like was having to cycle shells thru the magazine to load.

<http://www.drupalitalia.org/node/66535>